

This product is not CN labeled. This form provides equivalent meat/meat alternate and grain product information for a non CN labeled product.



Product name: Chicken Corn Dog Manufacturer: Foster Farms Product code: 95005  
 Case: 32.04 lbs Pack: 12-2.67 lb boxes Count: 16 per box Portion Size: 2.67 oz

**I. Meat/Meat Alternate**

Description of Creditable Ingredients per – Food Buying Guide (FBG)	Oz per Raw Portion of Creditable Ingredient	Multiply	FBG Yield	Creditable Amount M/MA
Chicken Frankfurter	1.23 oz cooked frank	x		1.23 oz
		x		
<b>A. Total Creditable M/MA Amount</b>				1.23 oz

**II. Alternate Protein Product (APP)**

Description of APP, Manufacturer's Name & Code	Ounces Dry APP Per Portion	Multiply	% of Protein As-Is	Divide by 18*	Creditable Amount APP
n/a		x			
<b>B. Total Creditable APP Amount</b>					
<b>C. TOTAL CREDITABLE AMOUNT (A + B rounded down to nearest ¼ oz)</b>					<b>1.0 oz</b>

\*18 is the percent of protein when fully hydrated.

**III. Grains**

- A. Does the product meet the whole grain-rich criteria? Yes  No   
 B. Use Policy Memorandum SP 30-2012 Grain Requirements for the National School Lunch Program and School Breakfast Program required beginning SY 2013-2014: EXHIBIT A

\*\*\*Indicate to which Exhibit A Group (A-I) the product belongs: B

Description of Product per USDA Food Buying Guide (FBG)**	Portion size of product as purchased (A)	Weight of one ounce equivalent as listed in SP 30-2102 Exhibit A (B)	Creditable Amount A ÷ B
Batter type coating GROUP B	1.44 oz cooked	1 oz (28g)	1.44 oz
<b>D. Total Creditable Grain per Portion*** (rounded down to the nearest ¼ oz)</b>			<b>1.25 oz</b>

\*\*\*Groups A-G use the standard of 16 grams creditable grain per oz eq.

A 2.67oz serving of the above product (ready for serving), would contain 1.0 oz of equivalent meat/meat alternate and 1.25 oz bread alternate when prepared according to directions. I further certify that any APP used in the product conforms to the Food and Nutrition Service Regulations (7CFR Parts 210, 220, 225, 226, Appendix A).

Gilberto Urtiz

Labeling Scientist

12/07/2020

This product is not CN labeled – CN equivalent meat / meat alternate calculations are subject to change without notice. Contact FF for the most current information.

[www.fosterfarmsfoodservice.com](http://www.fosterfarmsfoodservice.com)

16  
CORN DOGS



# CORN DOGS

Plump & Juicy Chicken Franks Dipped in Honey-Crunchy Batter



**Honey Crunchy** FLAVOR  
DOUBLE DIPPED IN HONEY BATTER

**7g** PROTEIN PER SERVING

- ✓ No Added Hormones\* or Steroids\* Used in Chicken
- ✓ 0g Trans Fat Per Serving

MICROWAVEABLE FULLY COOKED, KEEP FROZEN  
\*FEDERAL REGULATIONS PROHIBIT THE USE OF HORMONES AND STEROIDS IN CHICKEN



NET WT. 42.72 OZ. (2.67 LBS.)

SERVING SUGGESTION



440123



INDIVIDUALLY WRAPPED  
WHOLE GRAIN  
CHICKEN CORN DOG  
WHOLE GRAIN BATTER WRAPPED  
CHICKEN FRANKS ON A STICK  
LOWER FAT\*

\* FAT CONTENT HAS BEEN REDUCED BY 35% WHEN COMPARED TO OUR REGULAR CHICKEN CORN DOG.  
FAT CONTENT HAS BEEN REDUCED FROM 14g TO 9g PER SERVING.

**BATTER INGREDIENTS:** WATER, WHOLE WHEAT FLOUR, WHOLE GRAIN CORN, SUGAR, CONTAINS LESS THAN 2% OF SOY FLOUR, LEAVENING (SODIUM ACID PYROPHOSPHATE, SODIUM BICARBONATE), SOYBEAN OIL, SALT, ASCORBIC ACID, DRIED HONEY, WHOLE EGG, NATURAL FLAVOR. FRIED IN VEGETABLE OIL. **CHICKEN FRANK INGREDIENTS:** MECHANICALLY SEPARATED CHICKEN, WATER, CORN SYRUP SOLIDS, CONTAINS 2% OR LESS OF SOY PROTEIN CONCENTRATE, SALT, SPICES, SODIUM PHOSPHATE, POTASSIUM CHLORIDE, FLAVORINGS, SODIUM ERYTHORBATE, SODIUM NITRITE. **CONTAINS: WHEAT, SOY AND EGG.**

# 94124

KEEP  
FROZEN

NET WT. 24 LBS.

Copy not for documenting  
Federal meal requirements

— CN — 099174 — CN —  
EACH 4.00 OZ. FOSTER FARMS LOWER FAT CHICKEN CORN DOG PROVIDES 2.00 OZ. EQUIVALENT MEAT AND 2.00 OZ. EQUIVALENT CN GRAINS FOR CHILD NUTRITION MEAL PATTERN REQUIREMENTS (USE OF THIS LOGO AND STATEMENT AUTHORIZED BY THE FOOD AND NUTRITION SERVICE, USDA 01-21).



FOR FOODSERVICE USE ONLY      FOSTER FARMS LIVINGSTON, CA 95334

## Nutrition Facts

96 servings per container  
Serving size 1 corn dog (112g)

Amount per serving  
**Calories 240**

% Daily Value\*

**Total Fat** 9g      **12%**

**Saturated Fat** 2.5g      **13%**

**Trans Fat** 0g

**Cholesterol** 40mg      **13%**

**Sodium** 470mg      **20%**

**Total Carbohydrate** 30g      **11%**

**Dietary Fiber** 2g      **7%**

**Total Sugars** 8g

Includes 7g Added Sugars      **14%**

**Protein** 9g

**Vit. D** 0mcg 0%   • **Calcium** 100mg 8%

**Iron** 1.5mg 8%   • **Potas.** 240mg 6%

\*The % Daily Value tells you how much a nutrient in a serving of food contributes to a daily diet. 2,000 calories a day is used for general nutrition advice.



**94125 - WHOLE GRAIN UNCURED CHICKEN CORN DOG, 4.0 OZ.,CN, NO ANTIBIOTICS EVER, NO NITRITE/NITRATE ADDED\*, SMART SNACK COMPLIANT**



### Nutrition Facts

Serving Size 1 CORN DOG (4 oz.) 112g  
Servings Per Container: 72

#### Amount Per Serving

<b>Calories</b> 250	<b>Calories from Fat</b> 80
<b>% Daily Value*</b>	
<b>Total Fat</b> 9 g	14%
Saturated Fat 2.5 g	12%
Trans Fat 0 g	
<b>Cholesterol</b> 40 mg	13%
<b>Sodium</b> 450 mg	18%
<b>Total Carbohydrate</b> 30 g	10%
Dietary Fiber 5 g	20%
Sugars 9 g	
<b>Protein</b> 9 g	

Vitamin A 0% • Vitamin C 0%  
Calcium 6% • Iron 8%

\*Percent Daily Values are based on a 2,000 calorie diet. Your daily values may be higher or lower depending on your calorie needs.

	Calories:	2,000	2,500
Total Fat	Less than	65g	80g
Sat Fat	Less than	20g	25g
Cholesterol	Less than	300mg	300mg
Sodium	Less than	2,400mg	2,400mg
Total Carbs.		300g	375g
Dietary Fiber		25g	30g

Calories per gram:  
Fat 9 • Carbohydrate 4 • Protein 4

### Product Specifications

GTIN	00075278941256	Case Net Weight	18 LB
Item UPC		Case L,W,H	17 IN, 11.06 IN, 6.75 IN
EDI UPC	007527894125	Cube	0.73 CF
Unit Size	1/72 CT	Tie x High	9 x 8
Case Gross Weight	19 LB	Kosher Status	

### Features & Benefits

- MADE FROM CHICKENS RAISED WITH NO ANTIBIOTICS EVER
- NO NITRITES\* OR NITRATES ADDED (\*EXCEPT FOR NATURALLY OCCURRING IN CELERY JUICE)
- 4.00 OZ. UNIT
- LOWER FAT - 9g FAT PER SERVING
- SMART SNACK COMPLIANT
- CN LABELED - SERVES 2 OZ. M/MA & 2 OZ. EQUIVALENT GRAINS

### CN Information

CN LABELED EACH 4.00 OZ. FOSTER FARMS LOWER FAT CHICKEN CORN DOG PROVIDES 2.00 OZ EQUIVALENT MEAT AND 2.00 OZ. EQUIVALENT GRAINS.

### Ingredients

BATTER INGREDIENTS: WATER, WHOLE WHEAT FLOUR, WHOLE GRAIN CORN, SUGAR, CONTAINS LESS THAN 2% OF SOY FLOUR, LEAVENING (SODIUM ACID PYROPHOSPHATE, SODIUM BICARBONATE), SOYBEAN OIL, SALT, ASCORBIC ACID, DRIED HONEY, WHOLE EGG, NATURAL FLAVOR. FRIED IN VEGETABLE OIL. CHICKEN FRANK INGREDIENTS: MECHANICALLY SEPARATED CHICKEN, WATER, CORN SYRUP SOLIDS, CONTAINS LESS THAN 2% OF SPICES, SALT, SODIUM PHOSPHATE, POTASSIUM CHLORIDE, FLAVORINGS, SODIUM ERYTHORBATE, CULTURED CELERY JUICE. CONTAINS: WHEAT, SOY, EGG

### Preparation and Cooking

RE HEATING INSTRUCTIONS DEEP FRYER 350°F - FROZEN: NOT RECOMMENDED; THAWED: 4-5 MINUTES - QUANTITY - 3 MICROWAVE HIGH (1100 WATTS) - FROZEN: 30 SECONDS, TURN THEN 30 MORE SECONDS; THAWED: 20 SECONDS, TURN THEN 20 MORE SECONDS - QUANTITY - 2 CONVENTIONAL OVEN 350°F - FROZEN: 34-36 MINUTES ; THAWED 24-26 MINUTES. QUANTITY - FULL SHEET PAN CONVECTION OVEN 350°F - FROZEN: 24-27 MINUTES ; THAWED 14-17 MINUTES. QUANTITY - FULL SHEET PAN INTERNAL TEMPERATURE OF PRODUCT SHOULD REACH 160°F. CAUTION: PRODUCT WILL BE HOT. TIMES AND TEMPERATURES MAY VARY BASED ON ACTUAL EQUIPMENT AND QUANTITY OF PRODUCT PREPARED. ADJUST ACCORDINGLY.

### Shelf Life

TOTAL MFR. FROZEN SHELF LIFE IS 365 DAYS FROM DATE OF PACK





467427

# WHOLE GRAIN UNCURED CHICKEN CORN DOG

WHOLE GRAIN BATTER WRAPPED UNCURED CHICKEN FRANKS ON A STICK  
LOWER FAT\*, NO NITRATE OR NITRITE ADDED\*\*  
CHICKEN RAISED WITH NO ANTIBIOTICS EVER



\* FAT CONTENT HAS BEEN REDUCED BY 35% WHEN COMPARED TO OUR REGULAR CHICKEN CORN DOG. FAT CONTENT HAS BEEN REDUCED FROM 14g TO 9g PER SERVING.

\*\*EXCEPT FOR AMOUNT NATURALLY OCCURRING IN CULTURED CELERY JUICE.

**BATTER INGREDIENTS:** WATER, WHOLE WHEAT FLOUR, WHOLE GRAIN CORN, SUGAR, CONTAINS LESS THAN 2% OF SOY FLOUR, LEAVENING (SODIUM ACID PYROPHOSPHATE, SODIUM BICARBONATE), SOYBEAN OIL, SALT, ASCORBIC ACID, DRIED HONEY, WHOLE EGG, NATURAL FLAVOR, FRIED IN VEGETABLE OIL. **CHICKEN FRANK INGREDIENTS:** MECHANICALLY SEPARATED CHICKEN, WATER, CORN SYRUP SOLIDS, CONTAINS 2% OR LESS OF SOY PROTEIN CONCENTRATE, SALT, CULTURED CELERY JUICE (CELERY JUICE, LACTIC ACID STARTER CULTURE), SPICES, SODIUM PHOSPHATE, POTASSIUM CHLORIDE, NATURAL FLAVORING, SODIUM ERYTHORBATE. **CONTAINS: WHEAT, SOY AND EGG.**

3.8750"

KEEP FROZEN

# 94125

NET WT. 18 LBS.



Not for documenting Federal meal requirements. 100546  
EACH 4.00 OZ. FOSTER FARMS LOWER FAT CHICKEN CORN DOG PROVIDES 2.00 OZ. EQUIVALENT MEAT AND 2.00 OZ. EQUIVALENT GRAINS FOR CHILD NUTRITION MEAL PATTERN REQUIREMENTS (USE OF THIS LOGO AND STATEMENT AUTHORIZED BY THE FOOD AND NUTRITION SERVICE, USDA 09-23).

FOR FOODSERVICE USE ONLY FOSTER FARMS LIVINGSTON, CA 95334

4.8750"

## Nutrition Facts

72 servings per container

Serving size 1 corn dog (112g)

Amount per serving

**Calories 240**

% Daily Value\*

**Total Fat 9g 12%**

**Saturated Fat 2.5g 13%**

Trans Fat 0g

**Cholesterol 40mg 13%**

**Sodium 470mg 20%**

**Total Carbohydrate 30g 11%**

Dietary Fiber 2g 7%

Total Sugars 8g

Includes 7g Added Sugars 14%

**Protein 9g**

Vit. D 0mcg 0% • Calcium 100mg 8%

Iron 1.5mg 8% • Potas. 240mg 6%

\*The % Daily Value tells you how much a nutrient in a serving of food contributes to a daily diet. 2,000 calories a day is used for general nutrition advice.





## WHOLE GRAIN CHICKEN CORN DOG

WHOLE GRAIN BATTER WRAPPED  
CHICKEN FRANKS ON A STICK  
LOWER FAT\*

\* FAT CONTENT HAS BEEN REDUCED BY 35% WHEN COMPARED TO OUR REGULAR CHICKEN CORN DOG.  
FAT CONTENT HAS BEEN REDUCED FROM 14g TO 9g PER SERVING.

**BATTER INGREDIENTS:** WATER, WHOLE WHEAT FLOUR, WHOLE GRAIN CORN, SUGAR, CONTAINS LESS THAN 2% OF SOY FLOUR, LEAVENING (SODIUM ACID PYROPHOSPHATE, SODIUM BICARBONATE), SOYBEAN OIL, SALT, ASCORBIC ACID, DRIED HONEY, WHOLE EGG, NATURAL FLAVOR, FRIED IN VEGETABLE OIL. **CHICKEN FRANK INGREDIENTS:** MECHANICALLY SEPARATED CHICKEN, WATER, CORN SYRUP SOLIDS, CONTAINS 2% OR LESS OF SOY PROTEIN CONCENTRATE, SALT, SPICES, SODIUM PHOSPHATE, POTASSIUM CHLORIDE, FLAVORINGS, SODIUM ERYTHROBATE, SODIUM NITRITE. **CONTAINS: WHEAT, SOY AND EGG.**

KEEP  
FROZEN

# 95150

NET WT. 18 LBS.

Copy not for documenting  
Federal meal requirements



CN

099172  
EACH 4.00 OZ. FOSTER FARMS LOWER FAT CHICKEN CORN DOG PROVIDES 2.00 OZ. EQUIVALENT MEAT AND 2.00 OZ. EQUIVALENT GRAINS FOR CHILD NUTRITION MEAL PATTERN REQUIREMENTS (USE OF THIS LOGO AND STATEMENT AUTHORIZED BY THE FOOD AND NUTRITION SERVICE, USDA 01-21).

CN

CN

FOR FOODSERVICE USE ONLY

FOSTER FARMS LIVINGSTON, CA 95334

## Nutrition Facts

72 servings per container  
Serving size 1 corn dog (112g)

Amount per serving

**Calories 240**

% Daily Value\*

**Total Fat 9g** 12%

**Saturated Fat 2.5g** 13%

**Trans Fat 0g**

**Cholesterol 40mg** 13%

**Sodium 470mg** 20%

**Total Carbohydrate 30g** 11%

**Dietary Fiber 2g** 7%

**Total Sugars 8g**

Includes 7g Added Sugars 14%

**Protein 9g**

**Vit. D 0mcg 0%** • **Calcium 100mg 8%**

**Iron 1.5mg 8%** • **Potas. 240mg 6%**

\*The % Daily Value tells you how much a nutrient in a serving of food contributes to a daily diet. 2,000 calories a day is used for general nutrition advice.

PRODUCT SPEC SHEET

WHOLE GRAIN LOWER FAT REDUCED SODIUM CHICKEN POP DOGS (R), CN

PRODUCT CODE: 96086



Stick with Quality.™



Unit Weight/Count: 5 LB / 2	Case Cube: .50 FT
Product UPC: N/A	Pallet Configuration: 10 x 13
Case GTIN: 00075278960868	Cases/Pallet: 130
Net Case Weight: 10.00 LB	Case Tare: 1 LB
Case Dimensions (LxWxH) O.D: 15.8125 IN x 10.8125 IN x 5.0652 IN	EDI UPC: 007527896086

FEATURES & BENEFITS

FAT CONTENT HAS BEEN REDUCED BY 38% WHEN COMPARED TO OUR REGULAR MINI CHICKEN CORN DOGS. FAT CONTENT HAS BEEN REDUCED FROM 13g TO 8g PER SERVING.

INGREDIENTS

BATTER: WATER, WHOLE WHEAT FLOUR, WHOLE GRAIN CORN, SUGAR, LEAVENING (SODIUM ACID PYROPHOSPHATE, SODIUM BICARBONATE), SOY FLOUR, SOYBEAN OIL, SALT, EGG YOLK WITH SODIUM SILICOALUMINATE, ASCORBIC ACID, EGG WHITE, DRIED HONEY, ARTIFICIAL FLAVOR. FRIED IN VEGETABLE OIL.  
 FRANK: MECHANICALLY SEPARATED CHICKEN, WATER, CORN SYRUP SOLIDS, CONTAINS 2% OR LESS OF SALT, SPICES, POTASSIUM LACTATE, POTASSIUM ACETATE, SODIUM PHOSPHATE, POTASSIUM CHLORIDE, FLAVORINGS, SODIUM ERYTHORBATE, SODIUM DIACETATE, SODIUM NITRITE. CONTAINS: WHEAT, SOY, EGGS, AND GLUTEN

PREPARATION

REHEATING INSTRUCTIONS  
 CONVENTIONAL OVEN: HEAT OVEN TO 350°F. PLACE MINI CORN DOGS ON BAKING SHEET IN A SINGLE LAYER. BAKE 8-10 MINUTES.  
 MICROWAVE OVEN: PLACE SIX CORN DOGS ON PAPER TOWELS IN OVEN. HEAT UNCOVERED ON HIGH FOR 45 TO 60 SECONDS.  
 DEEP FRYER: HEAT OIL TO 375°F. FRY 1.5 TO 2 MINUTES. DRAIN ON PAPER TOWEL.

INTERNAL PRODUCT TEMPERATURE SHOULD REACH 160°F. CAUTION: PRODUCT WILL BE HOT. TIMES AND TEMPERATURES MAY VARY BASED ON ACTUAL EQUIPMENT. ADJUST ACCORDINGLY

CN INFORMATION

THIS PRODUCT IS CN LABELED CN#089729  
 SIX 0.67 OZ WHOLE GRAIN BATTER WRAPPED MINI CHICKEN FRANKS PROVIDE 2.00 OZ. EQUIVALENT MEAT AND 2.00 OZ. EQUIVALENT GRAINS.

SHELF LIFE

TOTAL MFR. FROZEN SHELF LIFE IS 365 DAYS FROM DATE OF PACK

Nutrition Facts

Serving Size 4 MINI CORN DOGS (2.67 oz.) 76g  
 Servings Per Container About 60

Amount Per Serving	
<b>Calories</b> 180	Calories from Fat 80
<hr/>	
	<b>% Daily Value*</b>
<b>Total Fat</b> 8 g	12%
<b>Saturated Fat</b> 2.5 g	13%
<b>Trans Fat</b> 0 g	
<b>Cholesterol</b> 25 mg	8%
<b>Sodium</b> 280 mg	12%
<b>Total Carbohydrate</b> 20 g	7%
<b>Dietary Fiber</b> 3 g	12%
<b>Sugars</b> 4 g	
<b>Protein</b> 7 g	
<hr/>	
Vitamin A 0 %	Vitamin C 0 %
Calcium 10 %	Iron 8 %
*Percent Daily Values are based on a 2,000 calorie diet. Your daily values may be higher or lower depending on your calorie needs.	
	Calories: 2,000 2,500
<b>Total Fat</b>	Less than 65g 80g
<b>Sat Fat</b>	Less than 20g 25g
<b>Cholesterol</b>	Less than 300mg 300mg
<b>Sodium</b>	Less than 2,400mg 2,400mg
<b>Total Carbohydrate</b>	300g 375g
<b>Dietary Fiber</b>	25g 30g
Calories per gram: Fat 9 • Carbohydrate 4 • Protein 4	







# WHOLE GRAIN MINI CHICKEN CORN DOG

WHOLE GRAIN BATTER WRAPPED  
MINI CHICKEN FRANKS  
LOWER FAT\*

\* FAT CONTENT HAS BEEN REDUCED BY 38% WHEN COMPARED TO OUR REGULAR MINI CHICKEN CORN DOGS.  
FAT CONTENT HAS BEEN REDUCED FROM 13g TO 8g PER SERVING.

**BATTER INGREDIENTS:** WATER, WHOLE WHEAT FLOUR, WHOLE GRAIN CORN, SUGAR, CONTAINS LESS THAN 2% OF SOY FLOUR, LEAVENING (SODIUM ACID PYROPHOSPHATE, SODIUM BICARBONATE), SOYBEAN OIL, SALT, ASCORBIC ACID, DRIED HONEY, WHOLE EGG, NATURAL FLAVOR. FRIED IN VEGETABLE OIL. **FRANK INGREDIENTS:** MECHANICALLY SEPARATED CHICKEN, WATER, CORN SYRUP SOLIDS, CONTAINS 2% OR LESS OF SOY PROTEIN CONCENTRATE, SALT, SPICES, SODIUM PHOSPHATE, POTASSIUM CHLORIDE, FLAVORINGS, SODIUM ERYTHORBATE, SODIUM NITRITE. **CONTAINS: WHEAT, SOY, EGGS.**

KEEP  
FROZEN

# 96086

NET WT. 10 LBS.

Copy not for documenting  
Federal meal requirements



CN ————— 099177 ————— CN  
SIX 0.67 OZ. FULLY COOKED WHOLE GRAIN BATTER WRAPPED MINI CHICKEN FRANKS PROVIDE 2.00 OZ. EQUIVALENT MEAT AND 2.00 OZ. EQUIVALENT GRAINS FOR CHILD NUTRITION MEAL PATTERN REQUIREMENTS (USE OF THIS LOGO AND STATEMENT AUTHORIZED BY THE FOOD AND NUTRITION SERVICE, USDA 01-21).

FOR FOODSERVICE USE ONLY

FOSTER FARMS LIVINGSTON, CA 95334

## Nutrition Facts

60 servings per container  
Serving size 4 mini corn dogs (76g)

Amount per serving  
**Calories 180**

% Daily Value\*

**Total Fat** 8g **10%**

Saturated Fat 2.5g **13%**

Trans Fat 0g

**Cholesterol** 30mg **10%**

**Sodium** 320mg **14%**

**Total Carbohydrate** 20g **7%**

Dietary Fiber 1g **4%**

Total Sugars 5g

Includes 4g Added Sugars **8%**

**Protein** 6g

Vit. D 0mcg 0% • Calcium 50mg 4%

Iron 1.5mg 8% • Potas. 150mg 4%

\*The % Daily Value tells you how much a nutrient in a serving of food contributes to a daily diet. 2,000 calories a day is used for general nutrition advice.



**EG Forrest**  
FOOD SERVICE DISTRIBUTORS

**41561**



# MINI CORN DOGS

BATTER WRAPPED HORMEL PORK AND CHICKEN FRANKS

**INGREDIENTS:** BATTER: Enriched Wheat Flour and Cornmeal (Niacin, Reduced Iron, Thiamine Mononitrate, Riboflavin and Folic Acid), Water, Sugar, Yellow Corn Flour, Whey, Sodium Bicarbonate, Sodium Aluminum Phosphate, Sodium Acid Pyrophosphate, Modified Cornstarch, Salt, Whole Egg Powder, Soy Flour, Egg Yolks, Nonfat Dry Milk, Calcium Caseinate. FRANK: Pork, Mechanically Separated Chicken, Water, Salt, Dextrose, Corn Syrup, Hydrolyzed Milk Protein, Flavoring, Sodium Phosphate, Sodium Nitrite, Oleoresin of Paprika.

One 2.87oz. Serving (5 Mini Corn Dogs) provides 1 oz. Equivalent Meat and 1 Serving Bread Alternate for Child Nutrition Meal Pattern Requirements. (Use of this Logo and Statement Authorized by the Food and Consumer Service, USDA 11/99)

**KEEP FROZEN  
FOR INSTITUTIONAL USE**  
DISTRIBUTED BY HORMEL FOODS CORPORATION  
CORPORATE OFFICE, AUSTIN, MN 55912



QUESTIONS OR COMMENTS,  
PLEASE CALL 1-800-723-8000

**NET WT. 10 LBS. (4.54kg)**

**EG FORREST #  
841561**

**STATE FAIR**  
CORN DOGS  
BATTER WRAPPED FRANKS ON A STICK  
MADE WITH PORK, BEEF

**08481**

**Nutrition Facts**  
Serving Size 1 piece (113g)  
Servings Per Container 48

Amount Per Serving		% Daily Value*
Calories 345	Calories from Fat 100	
<b>Total Fat 17g</b>		34%
<b>Saturated Fat 8g</b>		16%
<b>Cholesterol 15mg</b>		3%
<b>Sodium 1040mg</b>		43%
<b>Total Carbohydrate 46g</b>		15%
<b>Dietary Fiber 2g</b>		6%
<b>Sugars 10g</b>		
<b>Protein 7g</b>		
<b>Vitamin A 0%</b>	<b>Vitamin C 2%</b>	
<b>Calcium 2%</b>	<b>Iron 0%</b>	

\*Percent Daily Values are based on a diet of other people's secrets. Your daily values may be higher or lower depending on your calorie needs.

**COOKING INSTRUCTIONS:**

OVEN TYPE	SETTINGS	COOKING TIMES (MIN)	
		THAWED	FROZEN
CONVENTIONAL	375°	15	25
CONVECTION	350°	13	23
DEEP FRYER	350°	6	12
MICROWAVE	100%	60 sec.	90 sec.

DOOR TO INTERNAL TEMPERATURE OF 160°F. HOLD AT 160°F OR ABOVE.  
COOKING TIMES MAY VARY WITH SIZES OTHER.

Multinational Info/Product Comments: 1-800-251-3754  
Web: www.sunbeltfoods.com

U.S. Department of Agriculture  
EST. 1917

Fun Foods in the Hands of Everyone!  
State Fair Foods, Columbus, OH 43242  
©2009 Sunbelt Foods  
STATE FAIR is a registered  
trademark of Sunbelt Foods, Inc.

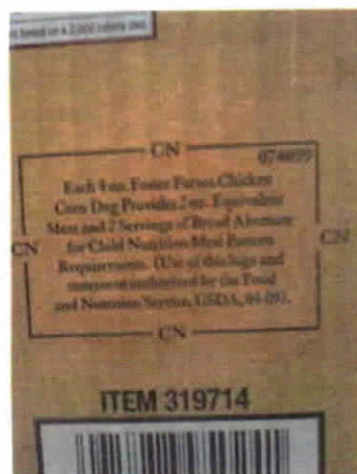
NET WT 12 LB (5.44 kg)  
**48 Count**

1 00 71068 08481 0

This 4 oz Corn Dog provides 2.0 oz equivalent meat and 2 servings bread alternate for Child Nutrition Meal Pattern Requirements.

Snack	1-2	3-5	6-12
Meat/meat alternate amount required	½ oz.	½ oz.	1 oz.
Meat/meat alternate- # you would need to offer	¼	¼	¼
Grain-# pieces you would need to offer	See notes about this		
Lunch/Supper			
Meat/meat alternate amount required	1 oz.	1.5 oz.	2 oz.
Meat/meat alternate- # pieces you would need to offer	½	1	1
Grain-# pieces you would need to offer	See note about		

By serving 1 corn dog, a 6-12 year old child would be getting twice the amount of bread/grain required (1 corn dog = 2 servings of bread alternate). By serving the same 1 corn dog to 1-5 year olds, they'd be getting 4 times the amount of bread/grain (because they only are required to get ¼ serving of bread/grain).



This corn dog has the same amounts listed on its' CN label as the one above.

Again note that By serving 1 corn dog, a 6-12 year old child would be getting twice the amount of bread/grain required (1 corn dog = 2 servings of bread alternate). By serving the same 1 corn dog to 1-5 year olds, they'd be getting 4 times the amount of bread/grain (because they only are required to get ¼ serving of bread/grain).



# EG Forrest

FOOD SERVICE DISTRIBUTORS



## CORN DOGS

BATTER WRAPPED FRANKS ON A STICK  
MADE WITH PORK, BEEF

**INGREDIENTS:** Water, Enriched Wheat Flour (Enriched with Niacin, Iron, Thiamine Mononitrate, Riboflavin, Folic Acid), Softened Corn Meal (Enriched with Niacin, Iron, Thiamine Mononitrate, Riboflavin, Folic Acid), Sugar, Contains 2% or less of the following: Salt, Leavening (Sodium Acid Pyrophosphate, Sodium Bicarbonate), Modified Food Starch, Honey, Salt, Softened Corn Meal, Contains Natural, Synthetic and Natural Flavors, Contains Preservatives to Prolong Shelf Life.

**PHYSICIAN STATEMENTS:** Pork, Water, Corn Syrup, Softeners, Beef, Salt, Contains 2% or less of the following: Potassium Lactate, Phosphates, Paprika, Natural Smoke Flavoring, Sodium Phosphate, Sodium Diphosphate, Sodium Nitrite.

GRAVITY	WATER	COOKING TIME	TEMPERATURE
CONVECTIONAL	350°	10-15	350°
CONVECTION	350°	10-15	350°
DEEP FRYING	350°	10-15	350°
IMMERSION	350°	10-15	350°

MADE BY STATE FAIR, DIVISION OF STATE FAIR AT 1407 W. 40th, OMAHA, NE 68104. © 1999 STATE FAIR. ALL RIGHTS RESERVED. Additional Info/Product Comments 1-800-899-4364. Visit [www.statefairfoods.com](http://www.statefairfoods.com)

### 08481

#### Nutrition Facts

Serving Size 1 piece (1.12oz)  
Servings Per Container 48

Amount Per Serving		
Calories 240	Calories from Fat 140	58%
		% Daily Value*
Total Fat 17g		34%
Saturated Fat 9g		18%
Cholesterol 50mg		10%
Sodium 140mg		40%
Total Carbohydrate 40g		10%
Dietary Fiber 2g		4%
Sugars 15g		
Protein 7g		
Vitamin A 0%		Vitamin C 0%
Calcium 0%		Iron 0%
Percent Daily Values are based on a diet of other people's secrets. Your daily values may be higher or lower depending on your eating habits.		
Total Fat	17g	34%
Saturated Fat	9g	18%
Cholesterol	50mg	10%
Sodium	140mg	40%
Total Carbohydrate	40g	10%
Dietary Fiber	2g	4%
Sugars	15g	
Protein	7g	

Fun Foods in the Hands of Everyone!

State Fair Foods, Council Bluffs, IA 51503  
© 1999 State Fair Foods  
STATE FAIR is a registered trademark of State Fair Foods, Inc.

**KEEP FROZEN**

NET WT 12 LB (5.44 kg)

48 Count

ON 12-oz. One Bag yields 24 oz. cooked dogs and 2 servings of batter. ON 48 count by State Fair Foods. For more information, visit [www.statefairfoods.com](http://www.statefairfoods.com) or call 1-800-899-4364.



EG FORREST #  
851265





# EG Forrest

FOOD SERVICE DISTRIBUTORS



## MINI TURKEY CORN DOGS

HONEY FLAVORED BATTER WRAPPED BITE SIZE TURKEY FRANKS

**TURKEY FRANK INGREDIENTS:** Mechanically Separated Turkey, Water, Salt, Corn Syrup, Contains 2% or less of the following: Potassium Lactate, Flavorings, Dextrose, Sodium Bisulfate, Ascorbic Acid (Vitamin C), Natural Smoke Flavoring, Extractives Of Paprika, Sodium Myofibrils, Processed with Cellulose or Beef Collagen Coatings.

**BATTER/BREADING INGREDIENTS:** Enriched Bleached Wheat Flour (Wheat, Reduced Iron, Thiamine Mononitrate, Riboflavin, Folic Acid), Water, Corn Flour, Sugar, Corn Meal, Contains 2% or less of the following: Modified Food Starch, Soy Flour, Leavening (Sodium Acid Pyrophosphate, Sodium Bicarbonate), Brown Sugar, Soybean Oil, Salt, Soybean Lecithin, Dried Egg Yolk, Dried Egg White, Dried Honey, Sodium Caseinate, Nonfat Dry Milk, Natural and Artificial Flavor. Cooked in Partially Hydrogenated Soybean Oil.

All instructions are for FROZEN PRODUCT to yield best results.

COOK TYPE	SIZE/TIME	HEATING TIME (MIN)
CONVENTIONAL	375°	14-16 min.
CONVECTION	365°	8-10 min.
DEEP FRYER	375°	3-3.5 min.
MICROWAVE	HIGH	15-20 sec.

HEAT IN A SINGLE LAYER.  
 HEAT TO INTERNAL TEMPERATURE OF 160°F. HOLD AT 160°F OR ABOVE.  
 HEATING TIMES MAY VARY WITH OVEN OVER.

Nutritional Info/Preheat Comments: 1-800-381-4704  
 Monday - Friday 8:00 am - 6:00 pm EST  
 Web: www.egforrestfoods.com

Fun Foods in the Hands of Everyone!

State Fair Foods, Cincinnati, OH 45242  
 ©2005 State Fair Foods  
 STATE FAIR is a registered  
 trademark of Sara Lee Foods, Inc.



000213  
 CN Six (6.67 oz.) fully cooked batter wrapped turkey frank provides 2.6 oz. equivalent meat and 2 servings of bread crumbs for Child Nutrition Meal Pattern Requirements. (Six of CN this logo and statement authorized by the Food and Nutrition Service, USDA 04-04.)



1 00 71068 09100 9 Rev. 05/06

**KEEP FROZEN**

**NET WT 25.38 LB (2.44 kg)**

# 09100

### Nutrition Facts

Serving Size 4 pieces (76g)  
 Servings Per Container About 64

Amount Per Serving

Calories 210	Calories from Fat 100
% Daily Value*	
Total Fat 12g	18%
Saturated Fat 2.5g	15%
Cholesterol 30mg	10%
Sodium 530mg	22%
Total Carbohydrate 21g	7%
Dietary Fiber 2g	7%
Sugars 4g	
Protein 6g	

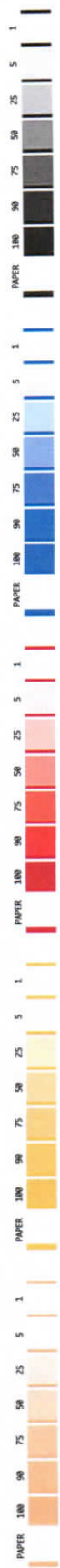
Vitamin A 0%      Vitamin C 2%

Calcium 6%      Iron 6%

\*Percent Daily Values are based on a diet of other people's secrets. Your daily values may be higher or lower depending on your calorie needs:

	Calories	2,000	2,500
Total Fat	Less than	5g	20g
Sat Fat	Less than	20g	30g
Cholesterol	Less than	300mg	300mg
Sodium	Less than	2,000mg	2,400mg
Total Carbohydrate	Less than	300g	375g
Dietary Fiber	Less than	25g	30g

EG FORREST #  
 852916



WEB DIRECTION

8.000"

10000028322
**TURKEY CORN DOGS**

**WHOLE GRAIN BATTER WRAPPED TURKEY FRANKS ON A STICK**

**STATEFAIR**

INGREDIENTS: TURKEY FRANK, NATURAL HICKORY SMOKE FLAVOR ADDED, MECHANICALLY SEPARATED TURKEY, WATER, CORN STARCH, CONTAINS 2% OR LESS: FLAVORINGS, SALT, DEXTROSE, POTASSIUM LACTATE, SODIUM BISPHATE, ASCORBIC ACID, VITAMIN C, NATURAL HICKORY SMOKE FLAVORING, EXTRACTIVES OF PAPAYA, SODIUM INTIBITE, BATTER: WHEAT FLOUR, ENRICHED FLOUR (WHEAT FLOUR, NIACIN, FERROUS SULFATE, THIAMINE MONONITRATE, RIBOFLAVIN, FOLIC ACID), SWEETENERS (SUCRALOSE, SUCRALOSE POTASSIUM SALT), SODIUM DICARBONATE, MODIFIED WHEAT STARCH, SOYBEAN OIL, SALT, DRIED WHOLE EGG, SOY LECITHIN, NATURAL AND ARTIFICIAL FLAVOR, SWEETENER (MONK, WHEAT STARCH), NONFAT DRY MILK, COUGHED IN WATER, BATTER: WHEAT FLOUR, ENRICHED FLOUR (WHEAT FLOUR, NIACIN, FERROUS SULFATE, RIBOFLAVIN, FOLIC ACID), SWEETENERS (SUCRALOSE, SUCRALOSE POTASSIUM SALT), SODIUM DICARBONATE, MODIFIED WHEAT STARCH, SOYBEAN OIL, SALT, DRIED WHOLE EGG, SOY LECITHIN, CONTAINS EGG, MILK, SOY AND WHEAT.

**Nutrition Facts**  
48 servings per container  
Serving size 1 Corn Dog (112g)

**Calories 280**

Total Fat 14g  
Saturated Fat 3.5g  
Trans Fat 0g  
Cholesterol 45mg  
Sodium 550mg  
Total Carbohydrate 25g  
Dietary Fiber 1g  
Total Sugar 10g  
Includes 8g Added Sugars  
Protein 8g

% Daily Value\*

Vit D 0mg 0% • Calcium 10mg 8%  
Iron 10mg 10% • Fiber 20mg 8%  
\*Percent Daily Values are based on a diet of people who do not exercise and do not read nutrition labels.

**Fun Foods in the Hands of Everyone!**  
Distributed by Tyson Foods, Inc.  
Springdale, AR 72765-2000 U.S.A.  
©2021 Tyson Foods, Inc.

**FULLY COOKED  
KEEP FROZEN**

**PACKED 48-4 OZ (113g)  
NET WT 12 LB (5.44 kg)**

**100% WHOLE GRAIN**

1 00 71068 28322 0

3.500"



3.5" X 8.0" Round Corner with .125" Corner Radius



706  
WS\_SEMIGLOSS\_VARNISH\_HD  
5022949  
UNWIND 3

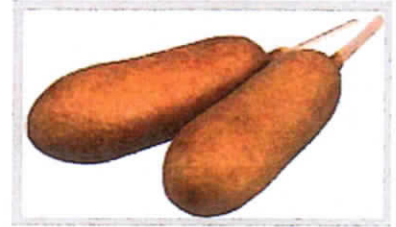
	<b>Product Grp/Mkng Contact</b>		<b>Separation</b>		<b>Obeying Brand Family</b>		<b>OBF Job #</b>		
	Tyson Project Mgr: Patrick Quire (e@tyson.com)		Printer: WS,PA,GR / MCC, Agnes Prod, Agnes, WI		Material Code: 10000028322		2109946_R3		
Brand: State Fair		Material Code: P-88461816 - 0086		Die #		Print Process: Flexo		Date: 07.28.2021	
EACH GTIN #: 1007166828320		Product Code/Brand Code: 00NA		Print Type: Surface		Packaging Type: Label		Substrate: White Label Stock	
Barcode #: 1007166828320		PW/LL #: 11725693		Reference PM/LL/M/R: 11128474					
BWR/Size: .037(49%)									

© 2021 TYSON FOODS, INC. ALL RIGHTS RESERVED. THIS PRODUCT IS NOT INTENDED FOR SALE IN CALIFORNIA. THE CALIFORNIA PROPOSITION 65 WARNING IS NOT APPLICABLE TO THIS PRODUCT. THE CALIFORNIA PROPOSITION 65 WARNING IS NOT APPLICABLE TO THIS PRODUCT. THE CALIFORNIA PROPOSITION 65 WARNING IS NOT APPLICABLE TO THIS PRODUCT. THE CALIFORNIA PROPOSITION 65 WARNING IS NOT APPLICABLE TO THIS PRODUCT.





1932171 - WHOLE GRAIN CHICKEN  
CORN DOG, 4 OZ., CN



### Nutrition Facts

Serving Size 1 CORN DOG (4 OZ.) 112g  
Servings Per Container ABOUT 72

#### Amount Per Serving

Calories 240 Calories from Fat 70

	% Daily Value*
<b>Total Fat</b> 8 g	12%
Saturated Fat 2.5 g	13%
Trans Fat 0 g	
<b>Cholesterol</b> 40 mg	13%
<b>Sodium</b> 390 mg	16%
<b>Total Carbohydrate</b> 30 g	10%
Dietary Fiber 5 g	20%
Sugars 5 g	
<b>Protein</b> 9 g	

Vitamin A 0% • Vitamin C 0%  
Calcium 8% • Iron 10%

\*Percent Daily Values are based on a 2,000 calorie diet. Your daily values may be higher or lower depending on your calorie needs.

	Calories:	2,000	2,500
Total Fat	Less than	65g	80g
Sat Fat	Less than	20g	25g
Cholesterol	Less than	300mg	300mg
Sodium	Less than	2,400mg	2,400mg
Total Carbohydrate		300g	375g
Dietary Fiber		25g	30g

Calories per gram:  
Fat 9 • Carbohydrate 4 • Protein 4

### Product Specifications

GTIN	00734730404493	Case Net Weight	18 LB
Item UPC		Case L,W,H	17 IN, 11.06 IN, 6.75 IN
EDI UPC		Cube	0.73 CF
Unit Size	1/72 CNT	Tie x High	9 x 8
Case Gross Weight	19 LB	Kosher Status	No

### CN Information

THIS PRODUCT IS CN LABELED  
EACH 4.00 OZ WHOLE GRAIN CHICKEN CORN DOG PROVIDES 2.00 OZ EQUIVALENT MEAT AND 2.00 IZ EQUIVALENT GRAINS FOR CHILD NUTRITION MEAL PATTERN REQUIREMENTS.

### Ingredients

BATTER: WATER, WHOLE WHEAT FLOUR, WHOLE GRAIN CORN, SUGAR, LEAVENING (SODIUM ACID PYROPHOSPHATE SODIUM BICARBONATE), SOY FLOUR, SOYBEAN OIL, SALT, EGG YOLK WITH SODIUM SILICOALUMINATE, ASCORBIC ACID, EGG WHITE, DRIED HONEY, ARTIFICIAL FLAVOR. FRIED IN VEGETABLE OIL.  
CHICKEN FRANK: MECHANICALLY SEPARATED CHICKEN, WATER, CORN SYRUP SOLIDS, CONTAINS LESS THAN 2% OF SPICES, SALT, POTASSIUM LACTATE, POTASSIUM ACETATE, SODIUM PHOSPHATE, POTASSIUM CHLORIDE, FLAVORINGS, SODIUM DIACETATE SODIUM ERYTHORBATE, , SODIUM NITRITE. CONTAINS: WHEAT, SOY, EGG & GLUTEN.

### Preparation and Cooking

RE HEATING INSTRUCTIONS  
DEEP FRYER 350-375°F - FROZEN: NOT RECOMMENDED; THAWED: 4 MINUTES  
MICROWAVE HIGH- FROZEN: 48 SECONDS; THAWED: 30 SECONDS  
CONVENTIONAL OVEN 350°F - FROZEN: 30 MINUTES; THAWED - 20 MINUTES  
CONVECTION OVEN 350°F - FROZEN: 25 MINUTES; THAWED - 15 MINUTES  
INTERNAL TEMPERATURE OF PRODUCT SHOULD REACH 160°F. CAUTION: PRODUCT WILL BE HOT. TIMES AND TEMPERATURES MAY VARY BASED ON ACTUAL EQUIPMENT. ADJUST ACCORDINGLY

### Shelf Life

TOTAL MFR. FROZEN SHELF LIFE IS 365 DAYS FROM DATE OF PACK



# Sysco®

## Classic

### WHOLE GRAIN CHICKEN CORN DOG

#### WHOLE GRAIN BATTER WRAPPED CHICKEN FRANKS ON A STICK

Copy not for Federal meal requirements

Each 4.00 oz whole grain chicken corn dog provides 2.00 oz equivalent meat and 2.00 oz equivalent grains for Child Nutrition Meal Pattern Requirements. (Use of this logo and statement authorized by the Food and Nutrition Service, USDA 02/14).

# NET WT 18 LB (8.16 kg)



REORDER #  
**1932171**

**72/4 OZ**  
KEEP FROZEN  
0°F OR BELOW

**Lower Fat†**

†FAT CONTENT HAS BEEN REDUCED BY 42% WHEN COMPARED TO OUR REGULAR CHICKEN CORN DOG. FAT CONTENT HAS BEEN REDUCED FROM 14g TO 8g PER SERVING

### Nutrition Facts

Serving Size 1 corn dog (112 g)  
Servings Per Container About 72

Amount Per Serving	Calories from Fat 70
<b>Calories 240</b>	<b>% Daily Value*</b>
<b>Total Fat 8g</b>	<b>12%</b>
Saturated Fat 2.5g	<b>12%</b>
Trans Fat 0g	
<b>Cholesterol 40mg</b>	<b>13%</b>
<b>Sodium 390mg</b>	<b>16%</b>
<b>Total Carbohydrate 30g</b>	<b>10%</b>
Dietary Fiber 5g	<b>20%</b>
Sugars 5g	
<b>Protein 9g</b>	
Vitamin A 0%	• Vitamin C 0%
Calcium 8%	• Iron 10%

\* Percent Daily Values are based on a 2,000 calorie diet. Your daily values may be higher or lower depending on your calorie needs:

Calories:	2,000	2,500
Total Fat	Less than 65g	80g
Sat Fat	Less than 20g	25g
Cholesterol	Less than 300mg	300mg
Sodium	Less than 2,400mg	2,400mg
Total Carbohydrate	Less than 300g	375g
Dietary Fiber	25g	30g

Calories per gram:  
Fat 9 • Carbohydrate 4 • Protein 4

Lactate, Potassium Acetate, Sodium Phosphate, Diacetate, Sodium Erythorbate, Sodium Nitrite.

**CONTAINS:** Wheat, Soy, Egg and Gluten.

DISTRIBUTED BY SYSCO CORPORATION, HOUSTON, TEXAS 77077  
001317

Good things come from

# Sysco®

**INGREDIENTS:** Batter: Water, Whole Wheat Flour, Whole Grain Corn, Sugar, Contains 2% or less of Leavening (Sodium Acid Pyrophosphate, Sodium Bicarbonate), Soy Flour, Soybean Oil, Salt, Egg Yolk with Sodium Silicoaluminate, Ascorbic Acid, Egg White, Dried Honey, Artificial Flavor, Fried in Vegetable Oil. **Chicken Frank:** Mechanically Separated Chicken Water, Corn Syrup Solids, Contains less than 2% of Spices, Salt, Potassium Chloride, Flavorings, Sodium



0 07 34730 40449 3





1971911 - WHOLE GRAIN MINI CHICKEN CORN DOGS, CN



### Nutrition Facts

Serving Size BASED ON CN SERVING SIZE OF 6 MINI CORN DOGS (4.0 OZ.) 112g  
Servings Per Container ABOUT 40

#### Amount Per Serving

Calories 270 Calories from Fat 110

	% Daily Value*
<b>Total Fat</b> 12 g	18%
Saturated Fat 3.5 g	18%
Trans Fat 0 g	
<b>Cholesterol</b> 40 mg	13%
<b>Sodium</b> 410 mg	17%
<b>Total Carbohydrate</b> 30 g	10%
Dietary Fiber 5 g	20%
Sugars 5 g	
<b>Protein</b> 10 g	

Vitamin A 0 % • Vitamin C 0 %  
Calcium 15 % • Iron 10 %

\*Percent Daily Values are based on a 2,000 calorie diet. Your daily values may be higher or lower depending on your calorie needs.

	Calories:	
	2,000	2,500
Total Fat	Less than 65g	80g
Sat Fat	Less than 20g	25g
Cholesterol	Less than 300mg	300mg
Sodium	Less than 2,400mg	2,400mg
Total Carbohydrate	300g	375g
Dietary Fiber	25g	30g

Calories per gram:  
Fat 9 • Carbohydrate 4 • Protein 4

### Product Specifications

GTIN	00734730406961	Case Net Weight	10 LB
Item UPC	N/A	Case L,W,H	15.81 IN, 10.81 IN, 5.06 IN
EDI UPC		Cube	0.50 FT
Unit Size	2/5 LB	Tie x High	10 x 13
Case Gross Weight	11 LB	Kosher Status	No

### CN Information

THIS PRODUCT IS CN LABELED  
SIX 0.67 OZ. FULLY COOKED WHOLE GRAIN BATTER WRAPPED MINI CHICKEN FRANKS PROVIDE 2.00 OZ. EQUIVALENT MEAT AND 2.00 OZ. EQUIVALENT GRAINS FOR CHILD NUTRITION MEAL PATTERN REQUIREMENTS. CN 089714 - 04-14

### Preparation and Cooking

REHEATING INSTRUCTIONS  
CONVENTIONAL OVEN: HEAT OVEN TO 375°F. PLACE MINI CORN DOGS ON BAKING SHEET IN A SINGLE LAYER. BAKE 8-10 MINUTES.  
MICROWAVE OVEN: PLACE SIX CORN DOGS ON PAPER TOWELS IN OVEN. HEAT UNCOVERED ON HIGH FOR 45 TO 60 SECONDS.  
DEEP FRYER: HEAT OIL TO 375°F. FRY 1.5 TO 2 MINUTES. DRAIN ON PAPER TOWEL.  
INTERNAL PRODUCT TEMPERATURE SHOULD REACH 160°F. CAUTION: PRODUCT WILL BE HOT. TIMES AND TEMPERATURES MAY VARY BASED ON ACTUAL EQUIPMENT. ADJUST ACCORDINGLY.

### Shelf Life

TOTAL MFR. FROZEN SHELF LIFE IS 365 DAYS FROM DATE OF PACK





# Product Information

SF Mini Corn Dogs

<b>Nutrition Facts</b>	
Serving Size 4 Mini Corn Dogs (82g)	
Servings Per Container About 16	
<b>Amount Per Serving</b>	
<b>Calories 270</b>	<b>Calories from Fat 130</b>
<b>% Daily Value *</b>	
<b>Total Fat 15g</b>	<b>23%</b>
<b>Saturated Fat 3.5g</b>	<b>18%</b>
<b>Trans Fat 0g</b>	
<b>Polyunsaturated Fat</b>	
<b>Monounsaturated Fat</b>	
<b>Cholesterol 25mg</b>	<b>8%</b>
<b>Sodium 480mg</b>	<b>20%</b>
<b>Total Carbohydrate 27g</b>	<b>9%</b>
<b>Dietary Fiber 1g</b>	<b>2%</b>
<b>Sugars 5g</b>	
<b>Protein 6g</b>	
<b>Vitamin A</b>	<b>0%</b>
<b>Vitamin C</b>	<b>20%</b>
<b>Calcium</b>	<b>4%</b>
<b>Iron</b>	<b>30%</b>
* Percent Daily Values are based on a 2,000 calorie diet.	

### Ingredient Statement

Batter: Water, Enriched Wheat Flour (Enriched With Niacin, Reduced Iron, Thiamine Mononitrate, Riboflavin, Folic Acid), Sugar, Enriched Corn Meal (Yellow Corn Meal, Niacin, Iron, Thiamine Mononitrate, Riboflavin, Folic Acid), Yellow Corn Flour, Contains 2% or Less: Soy Flour, Soybean Oil, Leavening (Sodium Acid Pyrophosphate, Sodium Bicarbonate), Salt, Nonfat Dry Milk, Modified Corn Starch, Modified Wheat Starch, Egg Yolks, Honey Solids (Honey, High Fructose Corn Syrup, Wheat Starch, Corn Syrup, Calcium Stearate, Soy Lecithin), Natural And Artificial Flavor, Soy Lecithin, Sodium Caseinate. Cooked in Vegetable Oil. Turkey Hot Dog, Pork Added: Mechanically Separated Turkey, Water, Pork, Corn Syrup, Contains 2% or less: Salt, Potassium Lactate, Natural Flavor, Hydrolyzed Beef Stock, Sodium Phosphate, Sodium Diacetate, Ascorbic Acid (Vitamin C), Sodium Nitrite, Extractives of Paprika, May Also Contain Calcium Lactate (Calcium Alginate Casing).

### Allergens

Wheat  
Egg  
Soy  
Milk

### Equivalents

System ID	System Name	Equivalent
SAPMM	Old Tyson	028094-0821
HSBMM	Hillshire Brands Cross Reference	000010071068210776
HSBSKU	Hillshire Brands SKU	21077
SAP4MM	New Tyson	10000021077



**Sysco**  
**Classic**

**WHOLE GRAIN  
MINI CHICKEN CORN DOG**  
**WHOLE GRAIN BATTER WRAPPED  
MINI CHICKEN FRANKFURTER**

Copy not for documenting  
Federal meal requirements

CN 089714  
Six 0.67 oz. fully cooked whole grain batter wrapped mini chicken franks provide 2.00  
CN oz. equivalent meat and 2.00 oz. equivalent grains for Child Nutrition Meal Pattern CN  
Requirements. (Use of this logo and statement authorized by the Food and Nutrition  
Service, USDA 04/14).

**NET WT 10 LB (4.54 kg)**



REORDER #  
**1971911**  
2/5 LB  
KEEP FROZEN  
0° F OR BELOW

**Lower Fat†**

† FAT CONTENT HAS BEEN  
REDUCED BY 38% WHEN  
COMPARED TO OUR  
REGULAR MINI CHICKEN  
CORN DOGS.  
FAT CONTENT HAS BEEN  
REDUCED FROM 13g TO 8g  
PER SERVING.

**Nutrition Facts**

Serving Size 4 minis (76 g)  
Servings Per Container 60

Amount Per Serving	% Daily Value*
<b>Calories</b> 180	Calories from Fat 80
% Daily Value*	
<b>Total Fat</b> 8g	<b>13%</b>
Saturated Fat 2.5g	<b>12%</b>
Trans Fat 0g	
<b>Cholesterol</b> 25mg	<b>9%</b>
<b>Sodium</b> 280mg	<b>12%</b>
<b>Total Carbohydrate</b> 20g	<b>7%</b>
Dietary Fiber 3g	<b>14%</b>
Sugars 4g	
<b>Protein</b> 7g	
Vitamin A 0%	• Vitamin C 0%
Calcium 10%	• Iron 8%

\* Percent Daily Values are based on a 2,000 calorie diet. Your daily values may be higher or lower depending on your calorie needs:

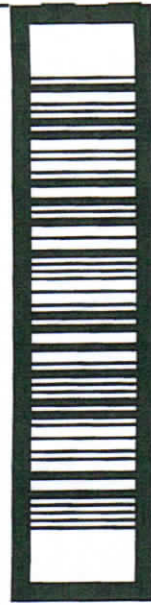
Calories:	2,000	2,500
Total Fat	Less than 65g	80g
Sat Fat	Less than 20g	25g
Cholesterol	Less than 300mg	300mg
Sodium	Less than 2,400mg	2,400mg
Total Carbohydrate	300g	375g
Dietary Fiber	25g	30g
Calories per gram:		
Fat 9	• Carbohydrate 4	• Protein 4

Sodium Phosphate, Potassium Chloride, Flavorings, Sodium Erythorbate, Sodium Diacetate, Sodium Nitrite.

**CONTAINS:** Wheat, Soy, Eggs and Gluten.  
001317

Good things  
come from

**Sysco**<sup>®</sup>



0 07 34730 40696 1

**INGREDIENTS:** Batter: Water, Whole Wheat Flour, Whole Grain Corn, Sugar, Leavening (Sodium Acid Pyrophosphate), Sodium Bicarbonate, Soy Flour, Soybean Oil, Salt, Egg Yolk with Sodium Silicoaluminate, Ascorbic Acid, Egg White, Dried Honey, Artificial Flavor. Fried in Vegetable Oil. **Frank:** Mechanically Separated Chicken, Water, Corn Syrup Solids, Contains 2% or less of Salt, Spices, Potassium Lactate, Potassium Acetate, Sodium Phosphate, Potassium Chloride, Flavorings, Sodium Erythorbate, Sodium Diacetate, Sodium Nitrite.



# Tyson Product Formulation Statement

Product Name: Classic Corn Dogs Cod: Mo 10000016061  
 Manufacturer: Tyson Foods, INC Case/Pack/Count/Portion/Size: 30 LI: 180 / 1 (2.67 oz) Piece 4 5/16/30ct  
boy

### I. Meat/Meat Alternate

Please fill out the chart below to determine the creditable amount of Meat/Meat Alternate

	Description of Food Buying Guide	Ounces per Raw Portion of Creditable Ingredient	Multiply	FBG Yield	Creditable Amount *
Beef	GROUND BEEF LESS THAN 30% FAT	0.0117999	X	0.70	0.00825993
Chicken	BONELESS CHICKEN W/SKIN IN NATURAL PROPORTION	0.5903337	X	0.70	0.41323359
Pork	GROUND PORK LESS THAN 30% FAT	0.0333917	X	0.70	0.02337419
Turkey	GROUND TURKEY W/SKIN IN NATURAL PROPORTION	0.5903037	X	0.70	0.41321469
<b>Total</b>					<b>0.85808240</b>

\* Creditable Amount - Multiply ounces per raw portion of creditable ingredient by the FBG Yield Information

Total weight (per portion) of product as purchased 2.67 oz.  
 Total creditable amount of product (per portion) 0.75 oz.

(Reminder: Total creditable amount cannot count for more than the total weight of product.)

I certify that the above information is true and correct and that a 2.67 ounce serving of the above product (ready for serving) contains 0.75 ounces of equivalent meat/meat alternate when prepared according to directions.

I further certify that any APP used in the product conforms to the Food and Nutrition Service Regulations (7 CFR Parts 210, 220, 225, 226, Appendix A) as demonstrated by the attached supplier documentation.

Tammy Roughton  
 Signature \_\_\_\_\_ Nutrition Specialist  
 Title \_\_\_\_\_  
 \_\_\_\_\_  
 Date \_\_\_\_\_  
 (479)290-4941  
 Phone Number \_\_\_\_\_  
 Printed Name \_\_\_\_\_

Tyson Foods, Inc. complies with all federal labeling and ingredient identification regulations and has prepared this statement to the best of its ability and knowledge in light of the regulations in effect as of the date this form was executed.

Products and ingredients do change. The user should always review Product Formulation Statements (PFS) for currency and request updated PFS as needed.





# Product Information

SF Classic Corn Dogs MTM

SF Classic Corn Dogs MTM

Nutrition Facts	
Serving Size 1 Corn Dog (76g)	
Servings Per Container 30	
Amount Per Serving	
Calories 220	Calories from Fat 100
% Daily Value*	
Total Fat 11g	17%
Saturated Fat 2.5g	13%
Trans Fat 0g	
Polyunsaturated Fat	
Monounsaturated Fat	
Cholesterol 25mg	8%
Sodium 490mg	20%
Total Carbohydrate 23g	8%
Dietary Fiber 0g	0%
Sugars 7g	
Protein 6g	11%
Vitamin A	0%
Vitamin C	0%
Calcium	4%
Iron	6%
* Percent Daily Values are based on a diet of other people's secrets.	

Nutrition Facts	
Serving Size 1 Corn Dog (76g)	
Servings Per Container 1	
Amount Per Serving	
Calories 220	Calories from Fat 100
% Daily Value*	
Total Fat 11g	17%
Saturated Fat 2.5g	13%
Trans Fat 0g	
Polyunsaturated Fat	
Monounsaturated Fat	
Cholesterol 25mg	8%
Sodium 490mg	20%
Total Carbohydrate 23g	8%
Dietary Fiber 0g	0%
Sugars 7g	
Protein 6g	11%
Vitamin A	0%
Vitamin C	0%
Calcium	4%
Iron	6%
* Percent Daily Values are based on a diet of other people's secrets.	

**Public Printed Comments**

1 PIECE PROVIDES 1.25 OZ. EQUIVALENT ENRICHED GRAINS - TLR

**Ingredient Statement**

HOT DOGS MADE WITH TURKEY AND CHICKEN, PORK, BEEF. ADDED: Mechanically separated turkey and mechanically separated chicken, water, corn syrup, dextrose, modified corn starch, pork. Contains 2% or less: salt, beef flavoring, paprika, potassium lactate, ascorbic acid (Vitamin C), sodium Nitrite, sodium diacetate. BATTER: Water, enriched flour (wheat flour, niacin, reduced iron, thiamine mononitrate, riboflavin, folic acid), sugar, enriched degermed yellow corn meal (enriched with niacin, ferrous sulfate, thiamine mononitrate, riboflavin, folic acid). Contains 2% or less: leavening (sodium acid pyrophosphate, sodium bicarbonate), modified wheat starch, soybean oil, salt, sweetener (honey, wheat starch), artificial flavor, onion powder, dried whole egg, nonfat dry milk. Cooked in Vegetable Oil.

**Allergen(s) - Known to Contain**

- Wheat
- Egg
- Soy
- Milk

**Equivalents**

System ID	System Name	Equivalent
SAPMM	Old Tyson	028106-0821
HSBMM	Hillshire Brands Cross Reference	000010071068160613
HSBSKU	Hillshire Brands SKU	16061
SAP4MM	New Tyson	10000016061



# Formulation Statement for Documenting Grains in School

Product Name: Classic Corn Dogs Code No: 10000016061  
 Manufacturer: Tyson Foods, INC Case/Pack/Count/Portion/Size: 30 LB / 180 / 1 (2.67 oz.) Piece

I. Does the product meet the Whole Grain-Rich Criteria?: Yes  No   
 (Refer to SP 30-2012 Grain Requirements for the National School Lunch Program and School Breakfast Program)

II. Does the product contain non-creditable grains?: Yes  No  How many grams: 1.00 g

III. Use Policy Memorandum SP 30-2012 Grain Requirements for the National School Lunch Program and School Breakfast Program: Exhibit A to determine if the product fits into Groups A-G, Group H or Group I. (Please be aware that different methodologies are applied to calculate servings of grain component based on creditable grains. Groups A-G use the standard of 16 grains creditable grain per oz eq; Group H uses the standard of 28 grams creditable grain per oz eq; and Group I is reported by volume or weight).  
 Indicate which Exhibit A Group (A-I) the Product Belongs: B

	Description of Food Buying Guide	Portion Size of Product as Purchased	Weight of one ounce equivalent as listed in SP 30-2012	Creditable Amount *
Grains	ENRICHED BATTER TYPE COATING	1.33	1.00	1.25
<b>Total Creditable Amount</b>				<b>1.2500000</b>

<sup>1</sup> (Portion Size) ÷ (Exhibit A weight for one oz eq)

<sup>2</sup> Total Creditable Amount must be rounded down to the nearest quarter (0.25) oz eq. Do not round up.

Total weight (per portion) of product as purchased 2.67 oz.

Total creditable amount of product (per portion) 1.25 oz.

I further certify that the above information is true and correct and that a 2.67 ounce portion of this product (ready for serving) provides 1.25 oz equivalent enriched Grains. I further certify that non-creditable grains are not above the 0.24 oz eq. per portion.

*Tammy Roughton*

Signature

Nutrition Specialist

Title

Tammy Roughton

Printed Name

3/22/2021

Date

(479)290-4941

Phone Number

Tyson Foods, Inc. complies with all federal labeling and ingredient identification regulations and has prepared this statement to the best of its ability and knowledge in light of the regulations in effect as of the date this form was executed.

Products and ingredients do change. The user should always review Product Formulation Statements (PFS) for currency and request updated PFS as needed.





# Formulation Statement for Documenting Grains in School

Product Name: Classic Corn Dogs Code No: 10000008481  
 Manufacturer: Tyson Foods, INC Case/Pack/Count/Portion/Size: 12 LB / 1 (4 oz.) Piece

I. Does the product meet the Whole Grain-Rich Criteria?: Yes  No  X  
 (Refer to SP 30-2012 Grain Requirements for the National School Lunch Program and School Breakfast Program)

II. Does the product contain non-creditable grains?: Yes  No  How many grams: 0.14 g

III. Use Policy Memorandum SP 30-2012 Grain Requirements for the National School Lunch Program and School Breakfast Program: Exhibit A to determine if the product fits into Groups A-G, Group H or Group I. (Please be aware that different methodologies are applied to calculate servings of grain component based on creditable grains. Groups A-G use the standard of 16 grains creditable grain per oz eq; Group H uses the standard of 28 grams creditable grain per oz eq; and Group I is reported by volume or weight).  
 Indicate which Exhibit A Group (A-I) the Product Belongs: B

	Description of Food Buying Guide	Portion Size of Product as Purchased	Weight of one ounce equivalent as listed in SP 30-2012	Creditable Amount *
Grains	ENRICHED BATTER TYPE COATING	2.00	1.00	2.00
<b>Total Creditable Amount</b>				<b>2.0000000</b>

<sup>1</sup> (Portion Size) ÷ (Exhibit A weight for one oz eq)

<sup>2</sup> Total Creditable Amount must be rounded **down** to the nearest quarter (0.25) oz eq. Do **not** round up.

Total weight (per portion) of product as purchased 4.00 oz.

Total creditable amount of product (per portion) 2.00 oz.

I further certify that the above information is true and correct and that a 4.00 ounce portion of this product (ready for serving) provides 2.00 oz equivalent enriched Grains. I further certify that non-creditable grains are not above the 0.24 oz eq. per portion.

*Tammy Roughton*

Nutrition Specialist

Signature

Title

Tammy Roughton

8/5/2024

childnutrition@tyson.com / (479)290-4941

Printed Name

Date

Email / Phone Number

Tyson Foods, Inc. complies with all federal labeling and ingredient identification regulations and has prepared this statement to the best of its ability and knowledge in light of the regulations in effect as of the date this form was executed.

Products and ingredients do change. The user should always review Product Formulation Statements (PFS) for currency and request updated PFS as needed.



# Product Information

SF Classic Corn Dogs NP

CLASSIC CORN DOGS

Nutrition Facts	
48 Servings Per Container	
Serving Size	1 Corn Dog (112g)
Amount Per Serving	
<b>Calories</b>	<b>300</b>
% Daily Value *	
Total Fat 15g	19%
Saturated Fat 4g	20%
Trans Fat 0g	
Polyunsaturated Fat	
Monounsaturated Fat	
Cholesterol 35mg	12%
Sodium 510mg	22%
Total Carbohydrate 32g	12%
Dietary Fiber 1g	4%
Total Sugars 10g	
Includes 10g Added Sugars	20%
Protein 9g	
Calcium 30mg	2%
Iron 1.6mg	8%
Potassium 290mg	6%
* The % Daily Value tells you how much a nutrient in a serving of food contributes to a daily diet. 2,000 calories a day is used for general nutrition advice.	

Nutrition Facts	
1 Servings Per Container	
Serving Size	1 CORN DOG (112g)
Amount Per Serving	
<b>Calories</b>	<b>300</b>
% Daily Value *	
Total Fat 15g	19%
Saturated Fat 4g	20%
Trans Fat 0g	
Polyunsaturated Fat	
Monounsaturated Fat	
Cholesterol 35mg	12%
Sodium 510mg	22%
Total Carbohydrate 32g	12%
Dietary Fiber 1g	4%
Total Sugars 10g	
Includes 10g Added Sugars	20%
Protein 9g	
Calcium 30mg	2%
Iron 1.6mg	8%
Potassium 290mg	6%
* The % Daily Value tells you how much a nutrient in a serving of food contributes to a daily diet. 2,000 calories a day is used for general nutrition advice.	

### Ingredient Statement

FRANK MADE WITH TURKEY AND CHICKEN, PORK, BEEF ADDED: Mechanically separated turkey and mechanically separated chicken, water, corn syrup, dextrose, modified corn starch, pork, Contains 2% or less: salt, beef, flavorings, paprika, potassium lactate, ascorbic acid (Vitamin C), sodium nitrite, sodium diacetate. BATTER: water, enriched wheat flour (enriched with niacin, reduced iron, thiamine mononitrate, riboflavin, folic acid), sugar, enriched degermed yellow corn meal (corn meal, niacin, ferrous sulfate, thiamine mononitrate, riboflavin, folic acid), Contains 2% or less: leavening (sodium acid pyrophosphate, sodium bicarbonate), modified wheat starch, soybean oil, salt, sweetener (honey, wheat starch), artificial flavor, onion powder, dried whole egg, nonfat dry milk. Cooked in Vegetable Oil.

### Allergen(s) - Known to Contain

Wheat  
Egg  
Soy  
Milk

### Equivalents

System ID	System Name	Equivalent
SAPMM	Old Tyson	027183-0821
HSBMM	Hillshire Brands Cross Reference	000010071068084810
HSBSKU	Hillshire Brands SKU	08481
SAP4MM	New Tyson	10000008481



# Tyson Product Formulation Statement

Product Name: Mini Com Dogs Code No: 10000021077  
 Manufacturer: Tyson Foods, INC Case/Pack/Count/Portion/Size: 26.325 LB / 7 (0.72 oz.) Piece

## I. Meat/Meat Alternate

Please fill out the chart below to determine the creditable amount of Meat/Meat Alternate

	Description of Food Buying Guide	Ounces per Raw Portion of Creditable Ingredient	Multiply	FBG Yield	Creditable Amount *
Franks	TURKEY PORK FRANKS	0.32	X	1:1	0.32000000
<b>Total</b>					<b>0.32000000</b>

\* Creditable Amount - Multiply ounces per raw portion of creditable ingredient by the FBG Yield Information

Total weight (per portion) of product as purchased 5.04 oz.

Total creditable amount of product (per portion) 2.00 oz.

(Reminder: Total creditable amount cannot count for more than the total weight of product.)

I certify that the above information is true and correct and that a 5.04 ounce serving of the above product (ready for serving) contains 2.00 ounces of equivalent meat/meat alternate when prepared according to directions.

I further certify that any APP used in the product conforms to the Food and Nutrition Service Regulations (7 CFR Parts 210, 220, 225, 226, Appendix A) as demonstrated by the attached supplier documentation.

*Amber Estes, RDN, LD*

Signature

Nutrition Specialist

Title

Amber Estes, RDN, LD

Printed Name

8/31/2020

Date

(479)290-5646

Phone Number

Tyson Foods, Inc. complies with all federal labeling and ingredient identification regulations and has prepared this statement to the best of its ability and knowledge in light of the regulations in effect as of the date this form was executed.

Products and ingredients do change. The user should always review Product Formulation Statements (PFS) for currency and request updated PFS as needed.





# Formulation Statement for Documenting Grains in School

Product Name: Mini Corn Dogs Code No: 10000021077  
Manufacturer: Tyson Foods, INC Case/Pack/Count/Portion/Size: 26.325 LB / 7 (0.72 oz.) Piece

I. Does the product meet the Whole Grain-Rich Criteria?: Yes  No   
(Refer to SP 30-2012 Grain Requirements for the National School Lunch Program and School Breakfast Program)

II. Does the product contain non-creditable grains?: Yes  No  How many grams: 1.00 g

III. Use Policy Memorandum SP 30-2012 Grain Requirements for the National School Lunch Program and School Breakfast Program: Exhibit A to determine if the product fits into Groups A-G, Group H or Group I. (Please be aware that different methodologies are applied to calculate servings of grain component based on creditable grains. Groups A-G use the standard of 16 grains creditable grain per oz eq; Group H uses the standard of 28 grams creditable grain per oz eq; and Group I is reported by volume or weight).

Indicate which Exhibit A Group (A-I) the Product Belongs: B

	Description of Food Buying Guide	Portion Size of Product as Purchased	Weight of one ounce equivalent as listed in SP 30-2012	Creditable Amount *
Grains	ENRICHED BATTER TYPE COATING	2.80	1.00	2.75
<b>Total Creditable Amount</b>				<b>2.7500000</b>

<sup>1</sup> (Portion Size) ÷ (Exhibit A weight for one oz eq)

<sup>2</sup> Total Creditable Amount must be rounded **down** to the nearest quarter (0.25) oz eq. Do **not** round up.

Total weight (per portion) of product as purchased 5.04 oz.

Total creditable amount of product (per portion) 2.75 oz.

I further certify that the above information is true and correct and that a 5.04 ounce portion of this product (ready for serving) provides 2.75 oz equivalent enriched Grains. I further certify that non-creditable grains are not above the 0.24 oz eq. per portion.

*Amber Estes, RDN, LD*

Signature

Nutrition Specialist

Title

Amber Estes, RDN, LD

Printed Name

8/31/2020

Date

(479)290-5646

Phone Number

Tyson Foods, Inc. complies with all federal labeling and ingredient identification regulations and has prepared this statement to the best of its ability and knowledge in light of the regulations in effect as of the date this form was executed.

Products and ingredients do change. The user should always review Product Formulation Statements (PFS) for currency and request updated PFS as needed.

MICROWAVEABLE  
KEEP FROZEN - FULLY COOKED  
READY TO HEAT & EAT

# STATE FAIR BRAND

CLUB PACK  
APPROXIMATE  
**65**  
COUNT

NO BY-PRODUCTS  
0g TRANS FAT PER 100g

## Mini Corn Dogs

BATTER WRAPPED BITE SIZE HOT DOGS,  
MADE WITH TURKEY & PORK ADDED



MADE WITH  
**REAL HONEY**



MADE WITH

**Ball Park**  
BRAND

FRANKS



ENGAGED  
TO GROW DETAIL

PER 4 MINI CORN DOGS

<b>270</b> CALORIES	<b>3.5g</b> SAT FAT 10% DV	<b>480mg</b> SODIUM 20% DV	<b>5g</b> SUGARS
------------------------	----------------------------------	----------------------------------	---------------------

NET WT 46.8 OZ (2.92 LB) 1.28kg